

Wayland Public Schools 2008-2009 Enrollment Report

Each year, on the first school day in October, we record the total number of students enrolled in our schools as part of the Massachusetts Department of Elementary and Secondary Education's annual census of children attending the Commonwealth's public schools. This year, total enrollment in the Wayland Public Schools on October 1, 2008, was 2,759 students, 37 fewer students than were enrolled on October 1, 2007 and 101 fewer students that were enrolled on October 1, 2006.

ENROLLMENTS BY GRADE

October 1, 2008

GRADE	CLAYPIT HILL	HAPPY HOLLOW	LOKER	MIDDLE SCHOOL	HIGH SCHOOL	TOTAL
* Pre-K					96	96
K	0	0	178			178
1	112	80	0			192
2	113	90	0			203
3	125	79	0			204
4	122	77	0			199
5	135	92	0			227
6				210		210
7				207		207
8				248		248
9					222	222
10					229	229
11					223	223
12					217	217
TOTAL K-12	607	418	178	665	891	2,759
Oct. 1, 2007 K-12	524	337	352	680	903	2,796
DIFFERENCE	83	81	-174	-15	-12	-37

* Pre-kindergarten numbers are for information only and are not included in totals.

Budget and staffing levels for the 2008-2009 school year were built on the assumption that 2,724 students would be enrolled this year in Grades K-12. Actual enrollment is 35 students, or 1.285%, above the in-house projection made last October and used to develop the FY08 School Department budget.

At the elementary level, enrollment is 1,203, 10 students fewer than last year, and 20 students above a projected 1,183. Fourteen of those additional students are enrolled at the kindergarten level. At the Middle School, enrollment is 665, 15 fewer students than last year, and one student above a projection of 664. At the High School, enrollment is 14 students above a projection of 877, for a total of 891 students. Based on these figures, Wayland's method of using three-year cohort survival averages to determine enrollment projections in Grades 1-12 for budget purposes continues to be a reliable model to use.

PROJECTED vs. ACTUAL ENROLLMENTS, K-12

October 1, 2008

GRADE	PROJECTED Oct. 1, 2008	ENROLLED Oct. 1, 2008	DIFFERENCE
K	164	178	14
1	186	192	6
2	212	203	-9
3	206	204	-2
4	188	199	11
5	227	227	0
6	211	210	-1
7	205	207	2
8	248	248	0
9	213	222	9
10	226	229	3
11	216	223	7
12	222	217	-5
TOTAL K-12	2,724	2,759	35
K-5	1,183	1,203	20
6-8	664	665	1
9-12	877	891	14

Of the 2,759 students enrolled in the Wayland Public Schools on October 1, 132 were Boston students participating in our METCO program. The number of Boston students enrolled in Wayland has remained fairly consistent over the past eight years.

ENROLLMENTS BY GRADE - METCO Students

October 1, 2008

GRADE	CLAYPIT HILL	HAPPY HOLLOW	LOKER	MIDDLE SCHOOL	HIGH SCHOOL	TOTAL
* Pre-K						0
K			6			6
1	6	7				13
2	2	4				6
3	6	2				8
4	8	5				13
5	4	7				11
6				9		9
7				13		13
8				13		13
9					15	15
10					9	9
11					9	9
12					7	7
METCO K-12	26	25	6	35	40	132

Elementary enrollment declined for the eighth consecutive year, with all elementary grade totals ranging between 178 and 227 students. The largest change in elementary enrollment from October 1, 2007 to October 1, 2008 occurs in Grade 4, with a loss of 31 students, and in Grade 1, with a loss of 14 students. These are partially offset by an increase in enrollment of 19 students in Grade 5. This year's Kindergarten enrollment continues to be well below the 20-year average kindergarten class of 197 and includes 6 Boston students attending Wayland Public Schools as part of the METCO program.

COMPARATIVE ENROLLMENTS GRADES K-12

2007-2008 vs. 2008-2009

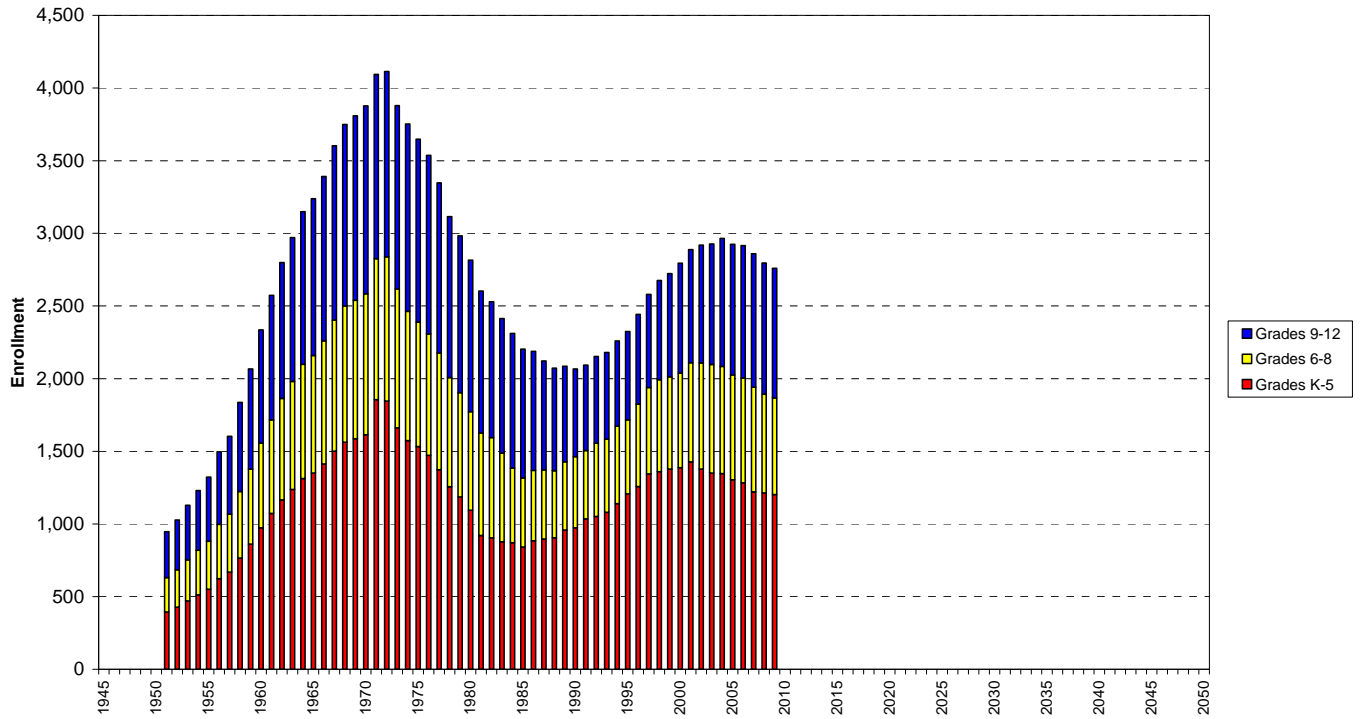
GRADE	2007-2008	2008-2009	CHANGE
K	174	178	4
1	206	192	-14
2	202	203	1
3	193	204	11
4	230	199	-31
5	208	227	19
6	208	210	2
7	248	207	-41
8	224	248	24
9	232	222	-10
10	221	229	8
11	222	223	1
12	228	217	-11
TOTAL K-12	2,796	2,759	-37
K-5	1,213	1,203	-10
6-8	680	665	-15
9-12	903	891	-12

Enrollment at the Middle School fell by 15 students, to 665, down from a high of 748 in 2002-2003. Last year's Grade 8 cohort of 224 students was replaced by an incoming Grade 6 class of 210, which accounts for most of the enrollment loss. This is the sixth straight year of enrollment decline across Grades 6, 7 and 8.

Wayland High School's enrollment, fairly consistent since 2003-2004, fell by 12 students, marking the second year of decline in its enrollment since 1993. The largest drop in enrollment was seen in Grade 12, with this year's graduating class having 11 fewer students than last year's senior class.

This is the fifth successive year of K-12 enrollment decline in the Wayland Public Schools since 2003-2004. Whether or not this trend continues or not remains to be seen; however, the following graphic is indicative of Wayland Public Schools' enrollment falling on the downward side of the "baby boomlet" enrollment cycle that began around 1990 and peaked with a total enrollment of 2,965 students in the 2003-2004 school year.

Wayland Enrollment: 1951 - Present



ENROLLMENT HISTORY

YEAR	K-5	6-8	9-12	TOTAL	CHANGE	% CHANGE
1970-1971	1,856	969	1,269	4,049		
1971-1972	1,845	993	1,276	4,014	-35	-0.86%
1972-1973	1,662	956	1,261	3,879	-135	-3.36%
1973-1974	1,573	890	1,289	3,752	-127	-3.27%
1974-1975	1,533	856	1,259	3,648	-104	-2.77%
1975-1976	1,473	835	1,229	3,537	-111	-3.04%
1976-1977	1,374	803	1,170	3,347	-190	-5.37%
1977-1978	1,256	752	1,108	3,116	-231	-6.90%
1978-1979	1,186	718	1,079	2,983	-133	-4.27%
1979-1980	1,095	678	1,043	2,816	-167	-5.60%
1980-1981	920	706	977	2,603	-213	-7.56%
1981-1982	904	690	935	2,529	-74	-2.84%
1982-1983	877	610	926	2,413	-116	-4.59%
1983-1984	871	515	925	2,311	-102	-4.23%
1984-1985	841	477	885	2,203	-108	-4.67%
1985-1986	884	484	821	2,189	-14	-0.64%
1986-1987	896	476	749	2,121	-68	-3.11%
1987-1988	906	461	705	2,072	-49	-2.31%
1988-1989	958	470	658	2,086	14	0.68%
1989-1990	974	489	604	2,067	-19	-0.91%
1990-1991	1,035	470	589	2,094	27	1.31%
1991-1992	1,051	505	596	2,152	58	2.77%
1992-1993	1,081	503	597	2,181	29	1.35%
1993-1994	1,140	533	587	2,260	79	3.62%
1994-1995	1,207	509	609	2,325	65	2.88%
1995-1996	1,258	566	619	2,443	118	5.08%
1996-1997	1,345	594	642	2,581	138	5.65%
1997-1998	1,360	633	683	2,676	95	3.68%
1998-1999	1,378	635	710	2,723	47	1.76%
1999-2000	1,387	652	756	2,795	72	2.64%
2000-2001	1,427	682	779	2,888	93	3.33%
2001-2002	1,378	730	811	2,919	31	1.06%
2002-2003	1,350	748	829	2,927	8	0.29%
2003-2004	1,347	737	881	2,965	38	1.29%
2004-2005	1,304	723	897	2,924	-41	-1.38%
2005-2006	1,283	721	912	2,916	-8	-0.27%
2006-2007	1,221	720	919	2,860	-56	-1.92%
2007-2008	1,213	680	903	2,796	-64	-2.24%
2008-2009	1,203	665	891	2,759	-37	-1.32%

2009-2010 Enrollment Projections

A three-year cohort survival ratio is used to develop internal projections for the Wayland Public Schools. This method has been employed for many years by the administration to make enrollment projections and takes into account housing growth, migration, retention, withdrawals, transfers and births over the three previous school years. It produces highly reliable projections for enrollments in Grades 1-12; however, it is less accurate in predicting kindergarten enrollments which may be affected by postponed kindergarten enrollment, attendance at private full-day kindergarten programs in the area, adoption rates, and housing turnover.

There are several sources of data one can use as the basis for predicting kindergarten enrollment: census data from the Town Clerk, birth data from five years before kindergarten enrollment, and self-reported data from parents and local preschools. January 2008 census data collected by Wayland's Town Clerk shows a total of 149 children residing in Wayland whose birth dates fell between September 1, 2003 and August 31, 2004. This data is only as complete and accurate as the census filings received by the Town Clerk.

Traditionally, Wayland has used a three-year average of birth-to-kindergarten ratios; that is, using a three-year average of the ratios of the number of kindergarteners to the number of children born to Wayland residents five years earlier as reported to the Commonwealth's Department of Public Health Registry of Vital Records and Statistics. In 2003, there were 124 births reported for Wayland residents, the lowest number of recorded births in Wayland since 1981. The birth-to-kindergarten ratio calculation yields a projection of 165 kindergarteners for the 2008-2009 school year.

Finally, the district's Special Education Department collects information from local preschools and parents on age-eligible children for kindergarten enrollment. Current data collection shows a total of 165 children eligible to enroll in kindergarten next September and includes students whose kindergarten enrollment was deferred from September 2008 less an as-yet unidentified number of children whose enrollment may be postponed for another year.

These three sources of preschool population data are used to define a reasonable range in the number of kindergarteners we might expect in September 2009. Discounting the data collected by the Town census as lower than the other two, one might reasonably assume that kindergarten enrollment next year will be around 165 students, a reduction of 13 students below the current kindergarten population.

Using only the cohort survival method for all grades, next year's total enrollment in the Wayland Public Schools is expected to be 2,701 students, 58 fewer students than are enrolled for the current school year. While the High School enrollment is expected to increase by 14 students, elementary and Middle School enrollment will decrease by 49 and 23 students, respectively. Comparing current year enrollments to projected enrollments shows by grade where the decreases and increases will occur:

COMPARATIVE ENROLLMENTS K - 12

GRADE	ACTUAL	PROJECTED	CHANGE	
	2008-2009	2009-2010		
K	178	165	-13	-7.2%
1	192	190	-2	-0.9%
2	203	193	-10	-4.9%
3	204	207	3	1.5%
4	199	203	4	1.8%
5	227	196	-31	-13.7%
6	210	230	20	9.7%
7	207	206	-1	-0.7%
8	248	206	-42	-16.8%
9	222	239	17	7.7%
10	229	216	-13	-5.7%
11	223	227	4	1.8%
12	217	223	6	2.6%
TOTALS	2,759	2,701	-58	-2.1%
K-5	1,203	1,154	-49	-4.1%
6-8	665	642	-23	-3.4%
9-12	891	905	14	1.5%

Claypit Hill will see the largest decrease in student population, from 607 to 583, closely followed by the Middle School, which will fall to 642 students. Of all the schools, only the High School can expect an increase in the total number of students enrolled for 2009-2010.

PROJECTED ENROLLMENT (3-Year Cohort Survival Ratios)

2009-2010

GRADE	CLAYPIT HILL	HAPPY HOLLOW	LOKER SCHOOL	MIDDLE SCHOOL	HIGH SCHOOL	TOTAL
K	0	0	165			165
1	111	79	0			190
2	113	80	0			193
3	115	92	0			207
4	124	78	0			203
5	120	76	0			196
6				230		230
7				206		206
8				206		206
9					239	239
10					216	216
11					227	227
12					223	223
TOTAL K-12	583	406	165	642	905	2,701
Oct. 1, 2007 K-12	607	418	178	665	891	2,759
DIFFERENCE	-24	-12	-13	-23	14	-58
% DIFFERENCE	-3.94%	-2.92%	-7.24%	-3.39%	1.53%	-2.10%

The in-house cohort survival projection is then compared to two others that use different methodologies for predicting enrollment – a straight five-year numerical average of the change in enrollment at each grade from year to year and a more complex projection prepared by NESDEC. The numerical average projection only considers the difference between number of births recorded five years earlier to the number of kindergarteners, yet it yields results very close to that of the district’s in-house cohort survival at all grade levels, for a total of 2,706 students. NESDEC’s calculations, using last year’s enrollment data, show greater variation in projections, for a total of 2,636. NESDEC calculations using this year’s October 1 enrollment data will not be available until later in the year.

COMPARATIVE ENROLLMENT PROJECTIONS

2009-2010

GRADE	2008-2009	Internal Forecasts		NESDEC**
	Actual	3-Year Cohort*	5-Year Average	
K	178	165	166	149
1	192	190	192	168
2	203	193	194	192
3	204	207	207	217
4	199	203	203	202
5	227	196	196	186
6	210	230	230	230
7	207	206	207	208
8	248	206	207	204
9	222	239	239	235
10	229	216	217	207
11	223	227	226	221
12	217	223	221	217
TOTAL	2,759	2,701	2,706	2,636

* Using 3-year average cohort ratios.

**Using January 2008 projections

Enrollment projections are used in the planning and development of the coming year’s budget. Staffing levels at all grade levels are predicated on the number of children reasonably expected to be enrolled at the start of the school year. Elementary enrollment numbers by school and by grade are used in conjunction with the School Committee’s Class Size Policy guidelines to determine the number of classroom sections needed at each grade level, which in turn drives the number of specialists (e.g. art, general music and physical education teachers) required at each school.

Based on enrollment projections, the district will need three fewer elementary classes at Claypit Hill than in 2008-2009, while the total number of sections at Happy Hollow and Loker Kindergarten will remain the same, with one grade level each at both Claypit Hill and Happy Hollow at or slightly above target class size for budgeting purposes.

PROJECTED ELEMENTARY CLASS SIZES
Using 3-Year Cohort Survival Ratios

	PROJECTED	NUMBER	AVERAGE	TARGET
<u>Claypit Hill</u>	TOTAL	CLASSROOMS	CLASS SIZE	UPPER LIMIT
Kindergarten	0	0		20
Grade 1	111	6	18.5	20
Grade 2	113	5	22.5	23
Grade 3	115	5	23.1	*
Grade 4	124	5	24.8	25
Grade 5	<u>120</u>	<u>5</u>	<u>24.0</u>	25
Total	583	26	22.4	
<u>Happy Hollow</u>				
Kindergarten	0	0		20
Grade 1	79	4	19.8	20
Grade 2	80	4	20.1	23
Grade 3	92	4	23.0	23
Grade 4	78	<u>4</u>	19.6	25
Grade 5	<u>76</u>	<u>3</u>	<u>25.3</u>	*
Total	406	19	21.4	
<u>Loker</u>				
Kindergarten	165	9	18.3	20
Grade 1	0	0		20
Grade 2	0	0		23
Grade 3	0	0		23
Grade 4	0	0		25
Grade 5	<u>0</u>	<u>0</u>		25
Total	165	9	18.3	
Total Elementary	1,154	54	20.7	

* Average class size exceeds target upper limit by <1.0 students per class.

WAYLAND PUBLIC SCHOOLS

ENROLLMENT TRACKING from 1996 - 2008

and ENROLLMENT PROJECTIONS for FY10, FY11, FY12 and FY13

Oct. 1	ENROLLMENT TRACKING													PROJECTIONS								
	1996	1997	1998	1999	2000	2001	2002	2003	2004	2005	2006	2007	2008	FY10 2 Yr. CSR	FY10 3 Yr. CSR	FY10 4 Yr. CSR	FY10 5 Yr. CSR	FY10 10 Yr. CSR	FY11 Using 3-Yr. CSR ('06-'08)	FY12	FY13	
Births	164	177	162	150	168	136	143	131	124	105	129	110	63 YTD									
K	242	228	219	209	232	186	197	203	170	187	193	174	178	160	165	158	155	156	165	140	172	
Grade 1	228	250	227	234	219	242	191	219	221	188	194	206	192	193	190	192	192	190	176	177	150	
Grade 2	228	225	245	233	241	219	244	200	218	232	186	202	203	195	193	195	194	195	191	177	178	
Grade 3	229	229	232	237	241	250	231	253	207	220	235	193	204	208	207	207	208	208	197	195	181	
Grade 4	200	229	230	235	243	242	249	225	257	202	213	230	199	205	203	202	203	204	205	195	193	
Grade 5	217	203	225	239	251	242	238	247	231	254	200	208	227	195	196	196	198	200	200	202	192	
Grade 6	207	220	209	227	246	255	246	233	240	234	253	208	210	233	230	230	228	229	199	203	205	
Grade 7	202	209	223	205	228	244	254	247	241	243	225	248	207	207	206	207	209	209	225	195	199	
Grade 8	185	204	203	220	208	231	248	257	242	244	242	224	248	207	206	207	206	208	205	225	194	
Grade 9	182	176	199	204	216	207	226	240	237	231	230	232	222	242	239	239	237	240	199	198	216	
Grade 10	153	179	176	198	204	216	198	227	241	234	224	221	229	216	216	217	218	219	232	193	193	
Grade 11	175	154	175	173	196	198	213	204	218	233	228	222	223	229	227	226	224	227	214	230	192	
Grade 12	132	173	160	181	162	190	192	210	201	214	237	228	217	220	223	222	221	220	227	214	230	
Total	2,580	2,679	2,723	2,795	2,887	2,922	2,927	2,965	2,924	2,916	2,860	2,796	2,759	2,710	2,701	2,698	2,692	2,706	2,636	2,544	2,495	
Delta	137	99	44	72	92	35	5	38	-41	-8	-56	-64	-37	-49	-58	-61	-67	-53	-65	-92	-50	
% Growth	5.6%	3.8%	1.6%	2.6%	3.3%	1.2%	0.2%	1.3%	-1.4%	-0.3%	-1.9%	-2.3%	-1.3%	-1.8%	-2.1%	-2.2%	-2.4%	-1.9%	-2.4%	-3.5%	-1.9%	
Totals																						
K-5	1,344	1,364	1,378	1,387	1,427	1,381	1,350	1,347	1,304	1,283	1,221	1,213	1,203	1,156	1,154	1,150	1,149	1,153	1,135	1,086	1,066	
6-8	594	633	635	652	682	730	748	737	723	721	720	680	665	647	642	644	643	646	630	622	598	
9-12	642	682	710	756	778	811	829	881	897	912	919	903	891	907	905	904	900	907	872	835	831	

Births for 2007 and 2008 are preliminary, as reported to Wayland's Town Clerk.