

Wayland Public Schools 2009-2010 Enrollment Report

Each year, on the first school day in October, we record the total number of students enrolled in our schools as part of the Massachusetts Department of Elementary and Secondary Education's annual census of children attending the Commonwealth's public schools. This year, total enrollment in the Wayland Public Schools on October 1, 2009, was 2,721 students, 38 fewer students than were enrolled on October 1, 2008. This is the sixth straight year of enrollment decline.

ENROLLMENTS BY GRADE

October 1, 2009

GRADE	CLAYPIT HILL	HAPPY HOLLOW	LOKER	MIDDLE SCHOOL	HIGH SCHOOL	TOTAL
* Pre-K					104	104
K	0	0	160			160
1	121	84	0			205
2	119	85	0			204
3	116	92	0			208
4	128	83	0			211
5	125	73	0			198
6				225		225
7				208		208
8				206		206
9					232	232
10					218	218
11					229	229
12					217	217
TOTAL K-12	609	417	160	639	896	2,721
Oct. 1, 2008 K-12	607	418	178	665	891	2,759
DIFFERENCE	2	-1	-18	-26	5	-38

* Pre-kindergarten numbers are for information only and are not included in totals.

Budget and staffing levels for the 2009-2010 school year were built on the assumption that 2,701 students would be enrolled this year in Grades K-12. Actual enrollment is 20 students, or .74%, above the in-house projection made last October and used to develop the FY10 School Department budget.

At the elementary level (K-5), enrollment is 1,186, 17 fewer students than last year, and 32 students above a projected 1,154. At the Middle School, enrollment is 639, 26 fewer students than last year, and 3 students below a projected 642. At the High School, enrollment is 9 students below a projected 905, for a total of 896 students. Based on these figures, Wayland's method of using three-year cohort survival averages to determine enrollment projections in Grades 1-12 for budget purposes continues to be a reliable model to use.

PROJECTED vs. ACTUAL ENROLLMENTS, K-12

October 1, 2009

GRADE	PROJECTED	ENROLLED	DIFFERENCE
	Oct. 1, 2009	Oct. 1, 2009	
K	165	160	-5
1	190	205	15
2	193	204	11
3	207	208	1
4	203	211	8
5	196	198	2
6	230	225	-5
7	206	208	2
8	206	206	0
9	239	232	-7
10	216	218	2
11	227	229	2
12	223	217	-6
TOTAL K-12	2,701	2,721	20
K-5	1,154	1,186	32
6-8	642	639	-3
9-12	905	896	-9

COMPARISON of ENROLLMENT to PROJECTIONS

GRADE	ACTUAL	INTERNAL	NESDEC
	Oct. 1, 2009	Projections	Projections
K	160	165	165
1	205	190	190
2	204	193	193
3	208	207	207
4	211	203	202
5	198	196	196
6	225	230	230
7	208	206	206
8	206	206	207
9	232	239	239
10	218	216	216
11	229	227	227
12	217	223	223
TOTAL K-12	2,721	2,701	2,701
DIFFERENCE		-20	-20
% DIFFERENCE		-0.73%	-0.74%
K-5	1,186	1,154	1,153
6-8	639	642	643
9-12	896	905	905

Numerical differences due to rounding in formulas used for projections.

Elementary enrollment declined for the ninth consecutive year, with all elementary grade totals ranging between 198 and 211 students. This year's Kindergarten enrollment of 160 continues a three-year trend of enrollment well below the 20-year average kindergarten class of 197.

Enrollment at the Middle School fell by 26 students, to 639, down from a high of 748 in 2002-2003. Last year's Grade 8 cohort of 248 students was replaced by an incoming Grade 6 class of 225, which accounts for most of the enrollment loss. This is the seventh straight year of enrollment decline across Grades 6, 7 and 8.

Wayland High School's enrollment, fairly consistent since 2003-2004, grew by 5 students. The largest grade cohort in the district is this year's freshman class of 232 students.

Of the 2,721 students enrolled in the Wayland Public Schools on October 1, 133 were Boston students participating in our METCO program. The number of Boston students enrolled in Wayland has remained fairly consistent over the past eight years.

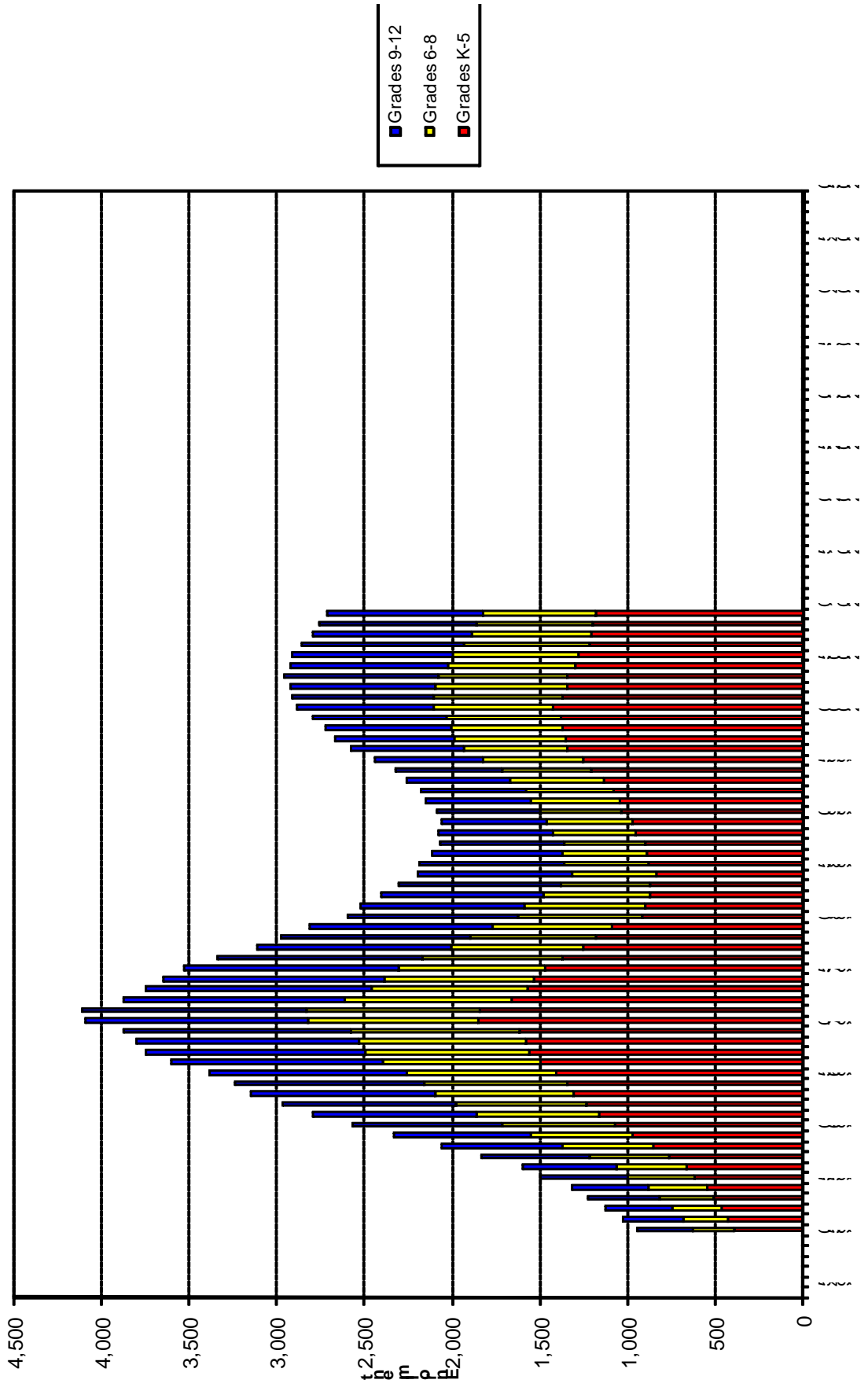
ENROLLMENTS BY GRADE - METCO Students

October 1, 2009

GRADE	CLAYPIT HILL	HAPPY HOLLOW	LOKER	MIDDLE SCHOOL	HIGH SCHOOL	TOTAL
* Pre-K						0
K			4			4
1	10	0				10
2	6	10				16
3	1	5				6
4	6	3				9
5	8	4				12
6				10		10
7				8		8
8				12		12
9					13	13
10					15	15
11					9	9
12					9	9
METCO K-12	31	22	4	30	46	133

This is the sixth successive year of K-12 enrollment decline in the Wayland Public Schools since 2003-2004. The following graphic is indicative of Wayland Public Schools' enrollment falling on the downward side of the "baby boomlet" enrollment cycle that began around 1990 and peaked with a total enrollment of 2,965 students in the 2003-2004 school year.

Wayland Enrollment: 1951 - Present



ENROLLMENT HISTORY

YEAR	K-5	6-8	9-12	TOTAL	CHANGE	% CHANGE
1970-1971	1,856	969	1,269	4,049		
1971-1972	1,845	993	1,276	4,014	-35	-0.86%
1972-1973	1,662	956	1,261	3,879	-135	-3.36%
1973-1974	1,573	890	1,289	3,752	-127	-3.27%
1974-1975	1,533	856	1,259	3,648	-104	-2.77%
1975-1976	1,473	835	1,229	3,537	-111	-3.04%
1976-1977	1,374	803	1,170	3,347	-190	-5.37%
1977-1978	1,256	752	1,108	3,116	-231	-6.90%
1978-1979	1,186	718	1,079	2,983	-133	-4.27%
1979-1980	1,095	678	1,043	2,816	-167	-5.60%
1980-1981	920	706	977	2,603	-213	-7.56%
1981-1982	904	690	935	2,529	-74	-2.84%
1982-1983	877	610	926	2,413	-116	-4.59%
1983-1984	871	515	925	2,311	-102	-4.23%
1984-1985	841	477	885	2,203	-108	-4.67%
1985-1986	884	484	821	2,189	-14	-0.64%
1986-1987	896	476	749	2,121	-68	-3.11%
1987-1988	906	461	705	2,072	-49	-2.31%
1988-1989	958	470	658	2,086	14	0.68%
1989-1990	974	489	604	2,067	-19	-0.91%
1990-1991	1,035	470	589	2,094	27	1.31%
1991-1992	1,051	505	596	2,152	58	2.77%
1992-1993	1,081	503	597	2,181	29	1.35%
1993-1994	1,140	533	587	2,260	79	3.62%
1994-1995	1,207	509	609	2,325	65	2.88%
1995-1996	1,258	566	619	2,443	118	5.08%
1996-1997	1,345	594	642	2,581	138	5.65%
1997-1998	1,360	633	683	2,676	95	3.68%
1998-1999	1,378	635	710	2,723	47	1.76%
1999-2000	1,387	652	756	2,795	72	2.64%
2000-2001	1,427	682	779	2,888	93	3.33%
2001-2002	1,378	730	811	2,919	31	1.06%
2002-2003	1,350	748	829	2,927	8	0.29%
2003-2004	1,347	737	881	2,965	38	1.29%
2004-2005	1,304	723	897	2,924	-41	-1.38%
2005-2006	1,283	721	912	2,916	-8	-0.27%
2006-2007	1,221	720	919	2,860	-56	-1.92%
2007-2008	1,213	680	903	2,796	-64	-2.24%
2008-2009	1,203	665	891	2,759	-37	-1.32%
2009-2010	1,186	639	896	2,721	-38	-1.38%
*2010-2011	1,176	630	868	2,675	-46	-1.70%

*Projections using 3-Year Cohort Survival

2010-2011 Enrollment Projections

A three-year cohort survival ratio is used to develop internal projections for the Wayland Public Schools. This method has been employed for many years by the administration to make enrollment projections and takes into account housing growth, migration, retention, withdrawals, transfers and births over the three previous school years. It produces highly reliable projections for enrollments in Grades 1-12; however, it is less accurate in predicting kindergarten enrollments which may be affected by postponed kindergarten enrollment, attendance at private full-day kindergarten programs in the area, adoption rates, and housing turnover.

There are several sources of data one can use as the basis for predicting kindergarten enrollment: census data from the Town Clerk, birth data from five years before kindergarten enrollment, and self-reported data from parents and local preschools. These three sources of preschool population data are used to define a reasonable range in the number of kindergarteners we might expect in September 2010. January 2009 census data collected by Wayland's Town Clerk shows a total of 158 children residing in Wayland whose birth dates fell between September 1, 2004 and August 31, 2005.

Traditionally, Wayland has used a three-year average of birth-to-kindergarten ratios; that is, using a three-year average of the ratios of the number of kindergarteners to the number of children born to Wayland residents five years earlier as reported to the Commonwealth's Department of Public Health Registry of Vital Records and Statistics. In 2005, there were 105 births reported for Wayland residents, the lowest number of recorded births in Wayland since 1981. The birth-to-kindergarten ratio calculation yields a projection of 135 kindergarteners for the 2009-2010 school year, which would be the lowest number of kindergarteners since 1986, when districtwide enrollment was 2,121.

Finally, the district's Special Education Department collects information from local preschools and parents on age-eligible children for kindergarten enrollment. Current information shows a total of 173 children eligible to enroll in kindergarten next September, including 13 students whose kindergarten enrollment was deferred from September 2009.

Using only the cohort survival method for all grades, next year's total enrollment in the Wayland Public Schools is expected to be 2,650 students, 71 fewer students than are enrolled for the current school year. However, given the unusually low number of kindergarteners predicted using this method, it is safe to estimate, for budget purposes, a kindergarten enrollment of 160, assuming the voluntary deferment of 13 kindergarten-eligible children in September. This raises the total K-12 enrollment for the 2009-2010 school year to 2,675. High School enrollment is expected to decrease by 28 students, Middle School enrollment by 9 and elementary enrollment (Grades 1-5) by 10, with kindergarten enrollment remaining constant at 160. Comparing current year enrollments to projected enrollments shows by grade where the decreases and increases will occur.

The High School will see the largest decrease in student population, from 896 to 868, with a graduating class of 217 replaced by an incoming freshman class of 198. Middle School enrollment will fall to 630, the lowest since 1996. Claypit Hill enrollment will fall below 600 while Happy Hollow enrollment will increase by 4 students.

PROJECTED ENROLLMENT (3-Yr Cohort Survival Ratios, except for K)

2010-2011

GRADE	CLAYPIT	HAPPY	MIDDLE	HIGH	TOTAL	
	HILL	HOLLOW				SCHOOL
K	0	0	160		160	
1	105	73	0		177	
2	125	86	0		211	
3	122	87	0		209	
4	118	93	0		211	
5	126	82	0		208	
6				201	201	
7				222	222	
8				207	207	
9					198	
10					227	
11					218	
12					225	
TOTAL K-12	595	421	160	630	868	2,675
Oct. 1, 2009 K-12	609	417	160	639	896	2,721
DIFFERENCE	-14	4	0	-9	-28	-46
% DIFFERENCE	-2.30%	1.04%	0.00%	-1.33%	-3.13%	-1.70%

COMPARATIVE ENROLLMENTS K - 12

GRADE	ACTUAL	PROJECTED	CHANGE
	2009-2010	2010-2011	
K	160	160	0.0%
1	205	177	-13.6%
2	204	211	3.5%
3	208	209	0.4%
4	211	211	0.0%
5	198	208	5.1%
6	225	201	-10.8%
7	208	222	6.9%
8	206	207	0.7%
9	232	198	-14.6%
10	218	227	3.9%
11	229	218	-4.8%
12	217	225	3.8%
TOTALS	2,721	2,675	-1.7%
K-5	1,186	1,176	-0.8%
6-8	639	630	-1.3%
9-12	896	868	-3.1%

The in-house cohort survival projection is then compared to two others that use different methodologies for predicting enrollment – a straight five-year numerical average of the change in enrollment at each grade from year to year and a more complex projection prepared by NESDEC. The numerical average projection only considers the difference between the number of births recorded five years earlier to the number of kindergarteners, yet it yields results very close to that of the district’s in-house cohort survival at all grade levels, for a total of 2,673 students. NESDEC’s calculations, using last year’s enrollment data, show greater variation in projections, for a total of 2,613, with a low kindergarten enrollment that is predicated on reported births five years earlier. NESDEC calculations using this year’s October 1 enrollment data will not be available until later in the year.

COMPARATIVE ENROLLMENT PROJECTIONS

2010-2011

2009-2010		Internal Forecasts		
GRADE	Actual	3-Year Cohort*	5-Year Average	NESDEC**
K	160	160	163	140
1	205	177	179	177
2	204	211	210	191
3	208	209	208	197
4	211	211	210	205
5	198	208	208	199
6	225	201	200	199
7	208	222	222	225
8	206	207	208	206
9	232	198	196	200
10	218	227	227	233
11	229	218	217	214
12	217	225	226	227
TOTAL	2,721	2,675	2,673	2,613

* Using 3-year average cohort ratios.

**Using January 2008 projections

Enrollment projections are used in development of the coming year’s budget. Staffing levels at all grade levels are predicated on the number of children reasonably expected to be enrolled at the start of the school year. Elementary enrollment numbers by school and by grade are used in conjunction with the School Committee’s Class Size Policy guidelines to determine the number of classroom sections needed at each grade level, which in turn drives the number of specialists (e.g. art, general music and physical education teachers) required at each school.

Based on enrollment projections, the district will need one more elementary section at Claypit Hill and at Happy Hollow for 2010-2011 than are scheduled in 2009-2010, while the number of sections at Loker Kindergarten will remain the same (8) , with two grades level at Claypit Hill at or slightly above target class size for budgeting purposes. All other class sizes are expected to be below the target upper limit.

PROJECTED ELEMENTARY CLASS SIZES
Using 3-Year Cohort Survival Ratios except for K

	PROJECTED	NUMBER	AVERAGE	TARGET
<u>Claypit Hill</u>	TOTAL	CLASSROOMS	CLASS SIZE	UPPER LIMIT
Kindergarten	0	0		20
Grade 1	105	5	20.9	* 20
Grade 2	125	6	20.8	23
Grade 3	122	6	20.3	23
Grade 4	118	5	23.5	25
Grade 5	<u>126</u>	<u>5</u>	<u>25.2</u>	* 25
Total	595	27	22.0	
<u>Happy Hollow</u>				
Kindergarten	0	0		20
Grade 1	73	4	18.2	20
Grade 2	86	4	21.6	23
Grade 3	87	4	21.8	23
Grade 4	93	<u>4</u>	23.3	25
Grade 5	<u>82</u>	<u>4</u>	<u>20.5</u>	25
Total	421	20	21.1	
<u>Loker</u>				
Kindergarten	160	8	20.0	20
Grade 1	0	0		20
Grade 2	0	0		23
Grade 3	0	0		23
Grade 4	0	0		25
Grade 5	<u>0</u>	<u>0</u>		25
Total	160	8	20.0	
Total Elementary	1,176	55	21.0	

* Average class size exceeds target upper limit by <1.0 students per class.

WAYLAND PUBLIC SCHOOLS

ENROLLMENT TRACKING from 1997 - 2009

and ENROLLMENT PROJECTIONS for FY11, FY12, FY13 and FY14

Oct. 1														PROJECTIONS										
	1997	1998	1999	2000	2001	2002	2003	2004	2005	2006	2007	2008	2009	FY11 2 Yr. CSR	FY11 3 Yr. CSR	FY11 4 Yr. CSR	FY11 5 Yr. CSR	FY11 10 Yr. CSR	FY12 Using 3-Yr. CSR ('07-'09)	FY13	FY14			
Births	177	162	150	168	136	143	131	124	105	129	112	89												
K	228	219	209	232	186	197	203	170	187	193	174	178	160	139	160	139	134	130	166	144	114			
Grade 1	250	227	234	219	242	191	219	221	188	194	206	192	205	180	177	174	175	172	177	184	159			
Grade 2	225	245	233	241	219	244	200	218	232	186	202	203	204	210	211	209	210	209	182	182	189			
Grade 3	229	232	237	241	250	231	253	207	220	235	193	204	208	208	209	208	208	210	216	187	186			
Grade 4	229	230	235	243	242	249	225	257	202	213	230	199	211	215	211	209	208	208	212	219	189			
Grade 5	203	225	239	251	242	238	247	231	254	200	208	227	198	209	208	208	208	211	208	209	216			
Grade 6	220	209	227	246	255	246	233	240	234	253	208	210	225	198	201	200	200	199	211	211	211			
Grade 7	209	223	205	228	244	254	247	241	243	225	248	207	208	223	222	221	222	224	198	208	208			
Grade 8	204	203	220	208	231	248	257	242	244	242	224	248	206	207	207	207	208	209	222	198	208			
Grade 9	176	199	204	216	207	226	240	237	231	230	232	222	232	198	198	197	197	198	199	213	190			
Grade 10	179	176	198	204	216	198	227	241	234	224	221	229	218	228	227	226	227	229	193	195	208			
Grade 11	154	175	173	196	198	213	204	218	233	228	222	223	229	219	218	217	215	215	227	193	195			
Grade 12	173	160	181	162	190	192	210	201	214	237	228	217	217	223	225	227	227	225	214	223	190			
Total	2,679	2,723	2,795	2,887	2,922	2,927	2,965	2,924	2,916	2,860	2,796	2,759	2,721	2,659	2,675	2,642	2,639	2,639	2,626	2,564	2,464			
Delta	99	44	72	92	35	5	38	-41	-8	-56	-64	-37	-38	-62	-46	-79	-82	-82	-49	-61	-101			
% Growth	3.8%	1.6%	2.6%	3.3%	1.2%	0.2%	1.3%	-1.4%	-0.3%	-1.9%	-2.3%	-1.3%	-1.4%	-2.3%	-1.7%	-2.9%	-3.0%	-3.0%	-1.8%	-2.3%	-3.9%			
Totals																								
K-5	1,364	1,378	1,387	1,427	1,381	1,350	1,347	1,304	1,283	1,221	1,213	1,203	1,186	1,161	1,176	1,147	1,143	1,141	1,161	1,124	1,054			
6-8	633	635	652	682	730	748	737	723	721	720	680	665	639	629	630	628	630	632	631	617	627			
9-12	682	710	756	778	811	829	881	897	912	919	903	891	896	869	868	867	866	867	834	824	783			

Births for 2007 and 2008 are preliminary, as reported to Wayland's Town Clerk.